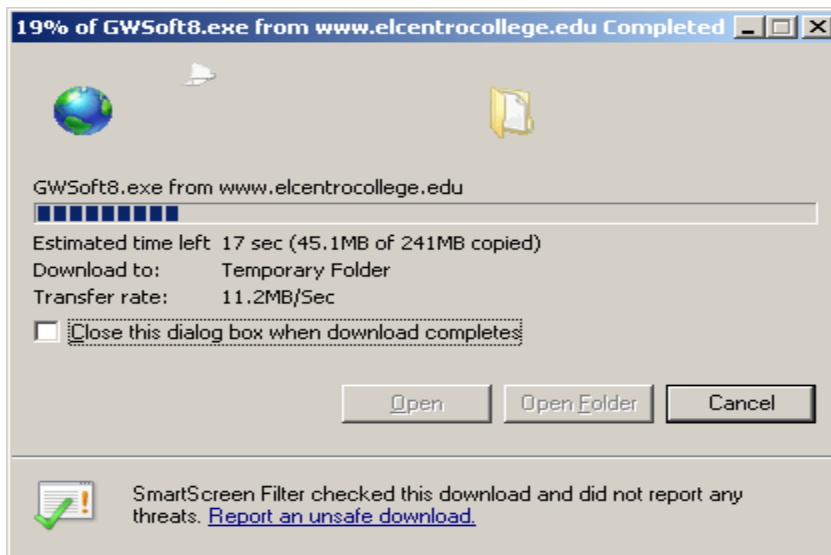
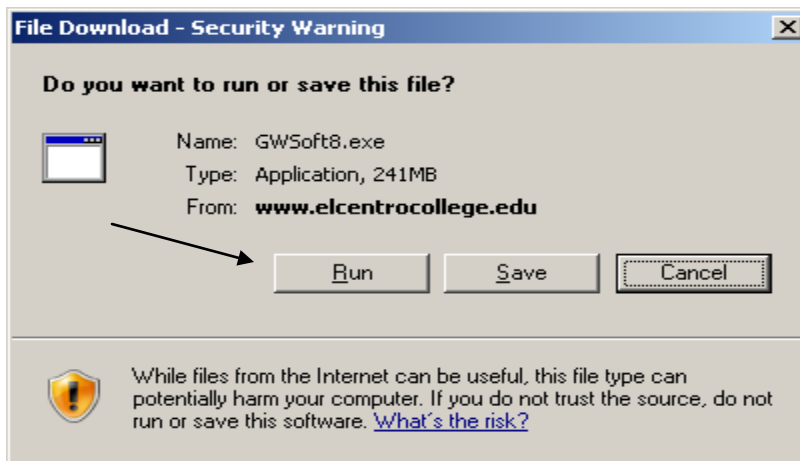




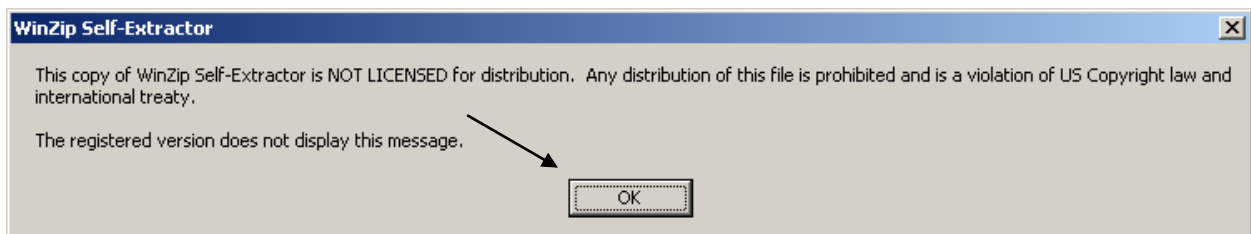
GroupWise Installation Instructions



1. Click "Run" to download and automatically start the installation process.

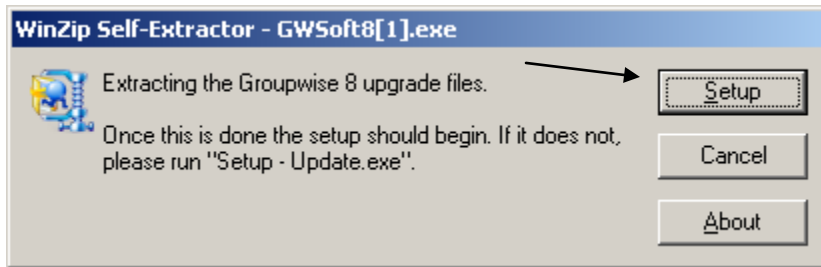


2. Click “Run” to validate the digital signature.

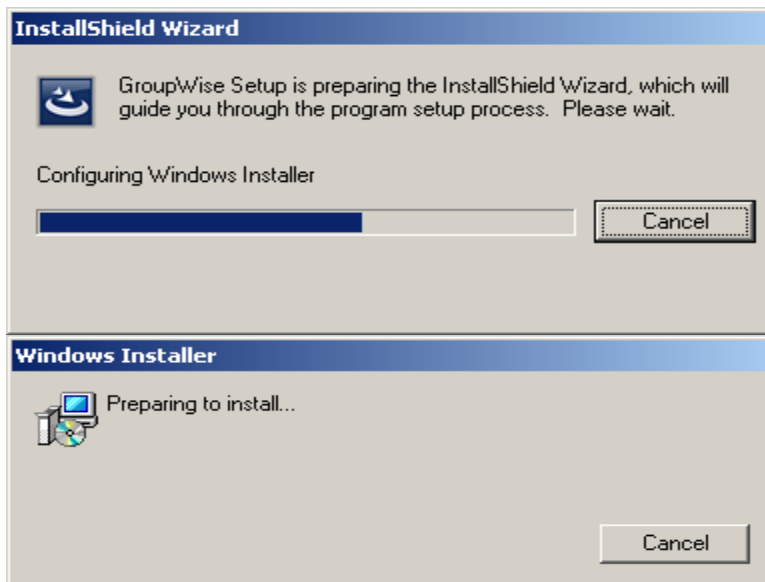


3. Click “ok” to the WinZip disclaimer.

Note: This does not mean you’re using an unapproved application it simply means it’s for this use only without purchasing a license.



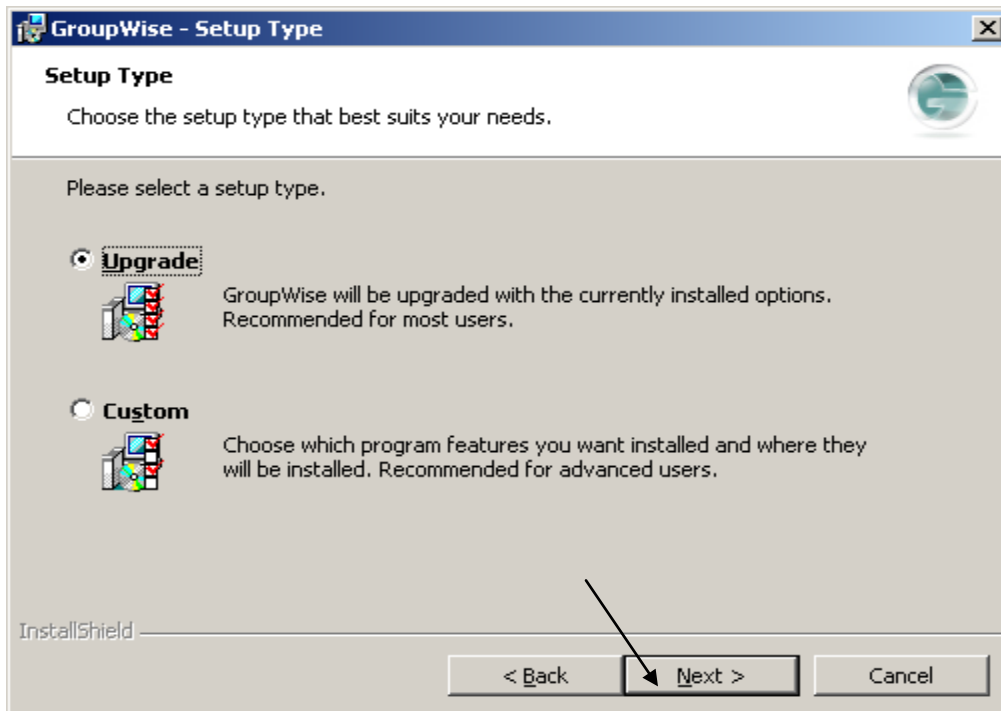
4. Click "Setup" to extract the file and the installation will automatically begin.



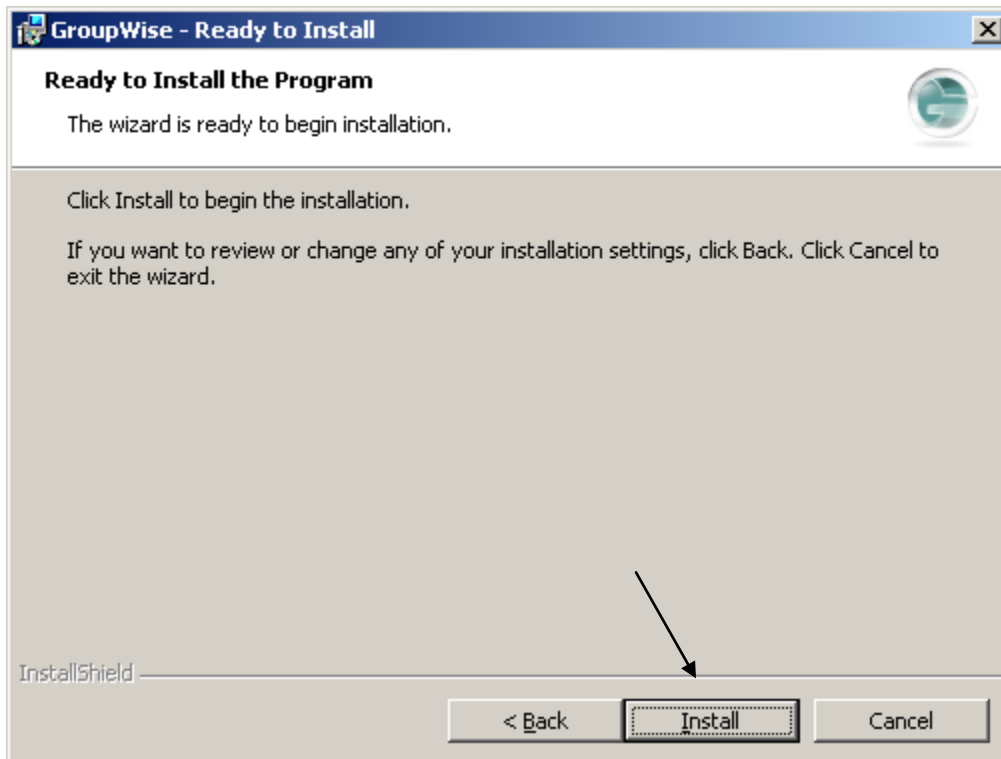
5. These windows will appear to show the application is launching successfully.



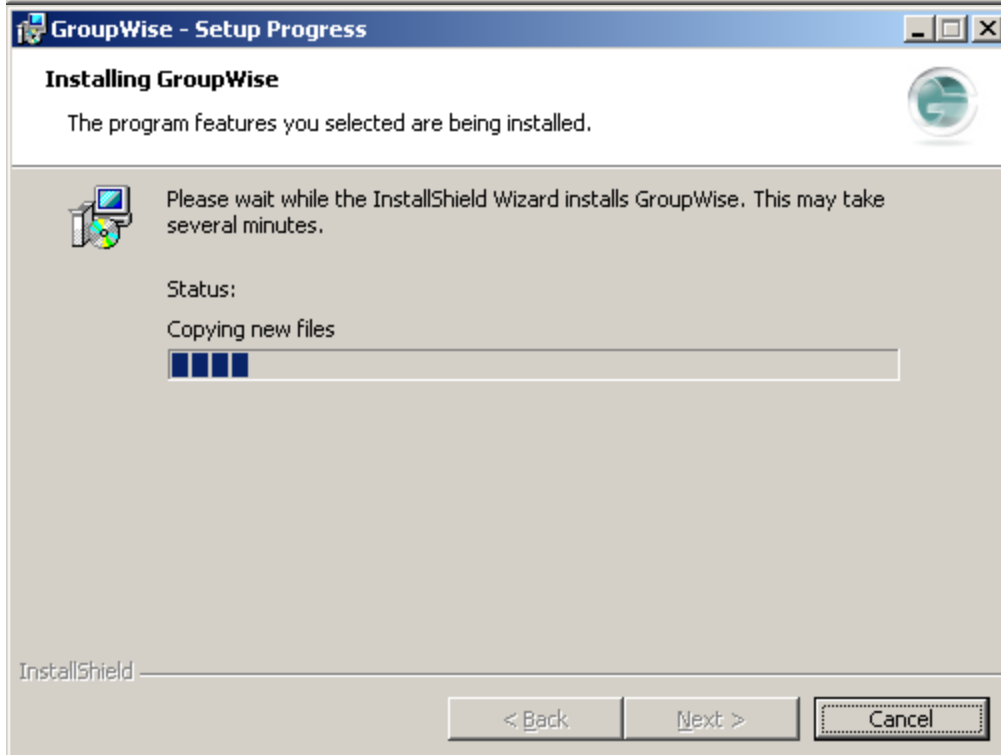
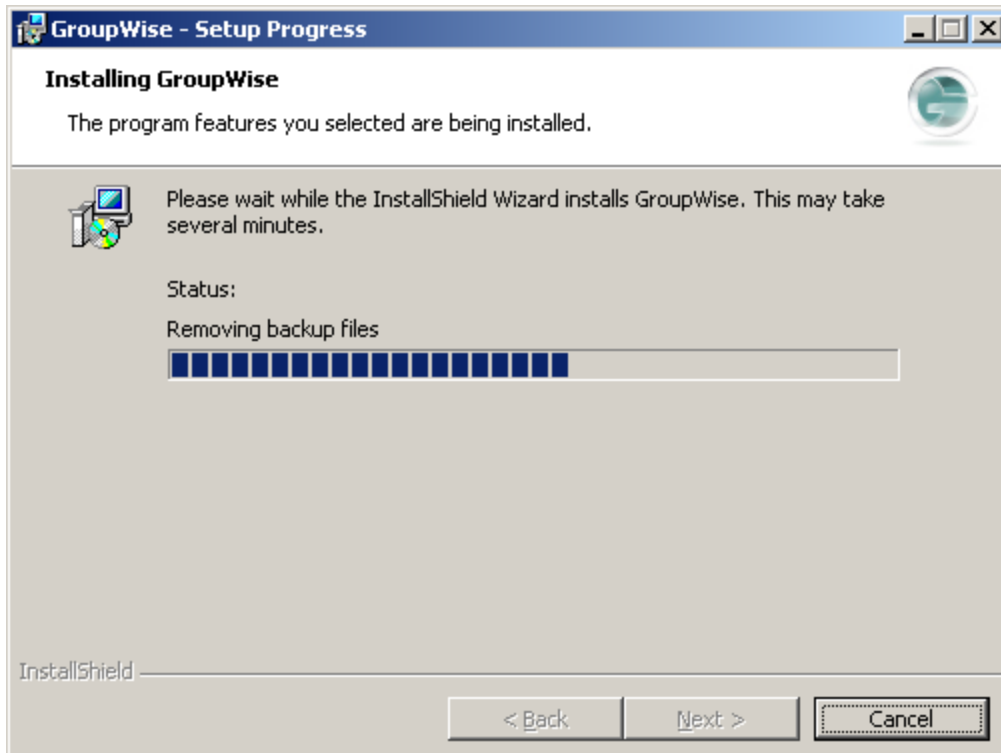
6. Click “Next” on the “GroupWise – Welcome” window to continue.



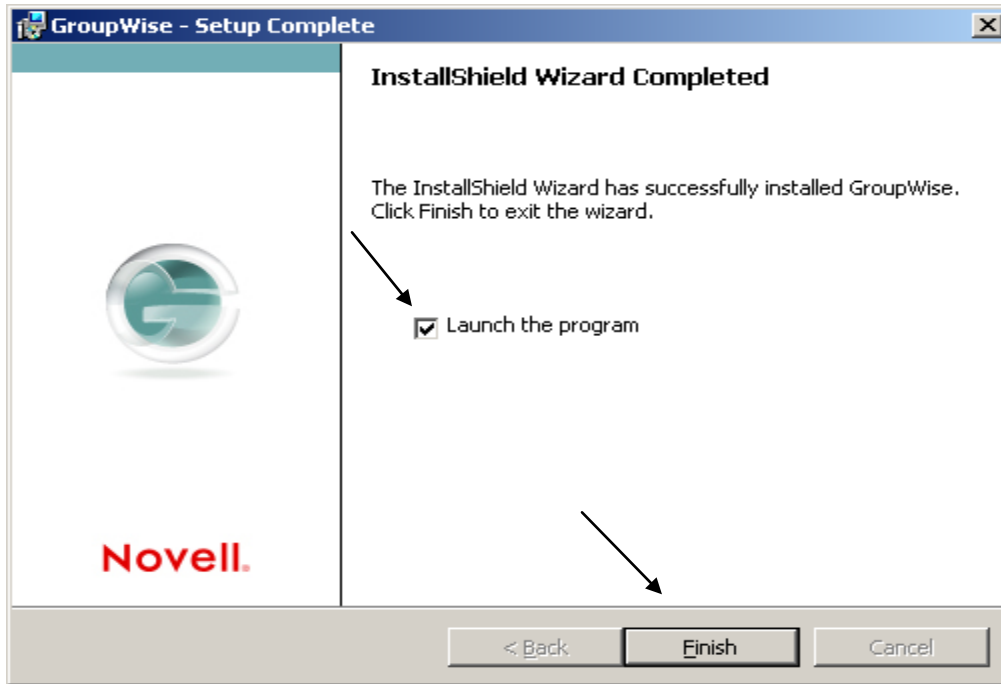
7. Leave “Upgrade” selected, (or select it if needed) and click “Next”.



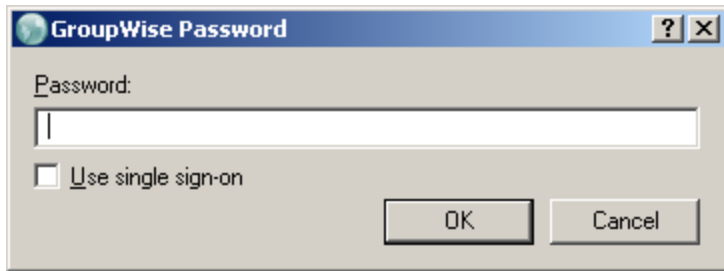
8. Click "Install" on the "GroupWise – Ready to Install" window.



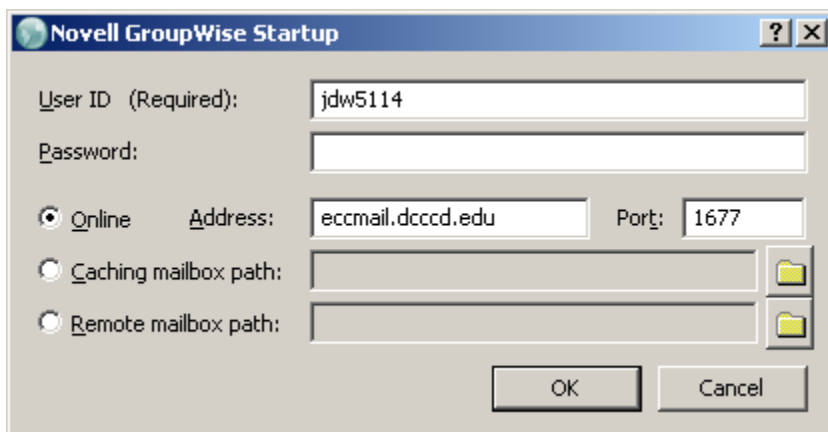
9. The application will continue to install, please allow several minutes to complete.



10. Click the box labeled "Launch the Program" to insert a checkmark and click "Finish"



11. You should be able to type in your GroupWise Password and click ok to sign-on.



12. If you're unable to login this window will pop up. Ensure the information shown in the graphic above is present. The "User ID" is the same as your login ID. Then type your GroupWise password. The address should read as in the picture; eccmail.dcccd.edu.

Please contact the EL Centro Helpdesk at 214-860-2167 if you have any trouble with the installation.